

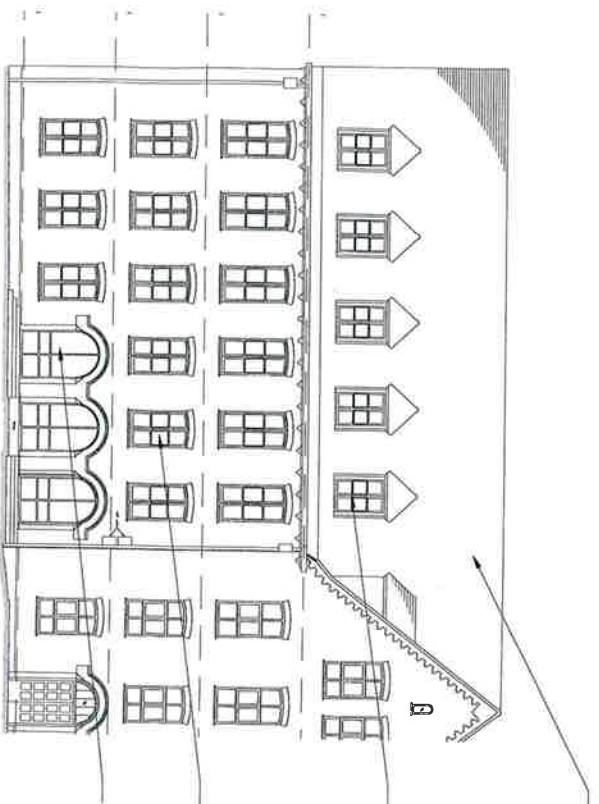
EXISTING TILES TO MAIN ROOF, DORMERTS AND  
DORMERS CHEEKS TO BE REPLACED

DORMER WINDOWS INCREASED IN HEIGHT WITH METAL  
FLAT BAR BALUSTRADE AND NEW WINDOWS

EXISTING WINDOWS REPLACED WITH NEW METAL  
DOUBLE GLAZED WINDOWS

EXISTING SHOPFRONT TO BE REPLACED

SOUTH ELEVATION 3

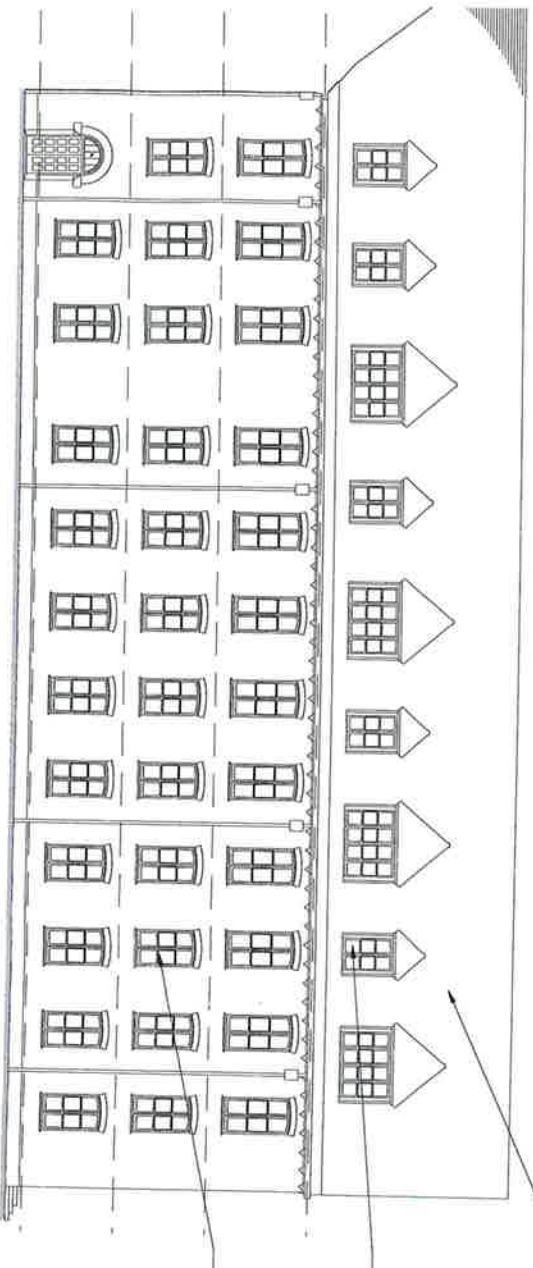


EXISTING TILES TO MAIN ROOF, DORMERTS AND  
DORMERS CHEEKS TO BE REPLACED

DORMER WINDOWS INCREASED IN HEIGHT WITH METAL  
FLAT BAR BALUSTRADE AND NEW WINDOWS

EXISTING WINDOWS REPLACED WITH NEW METAL  
DOUBLE GLAZED WINDOWS

EAST ELEVATION 4



19/01031

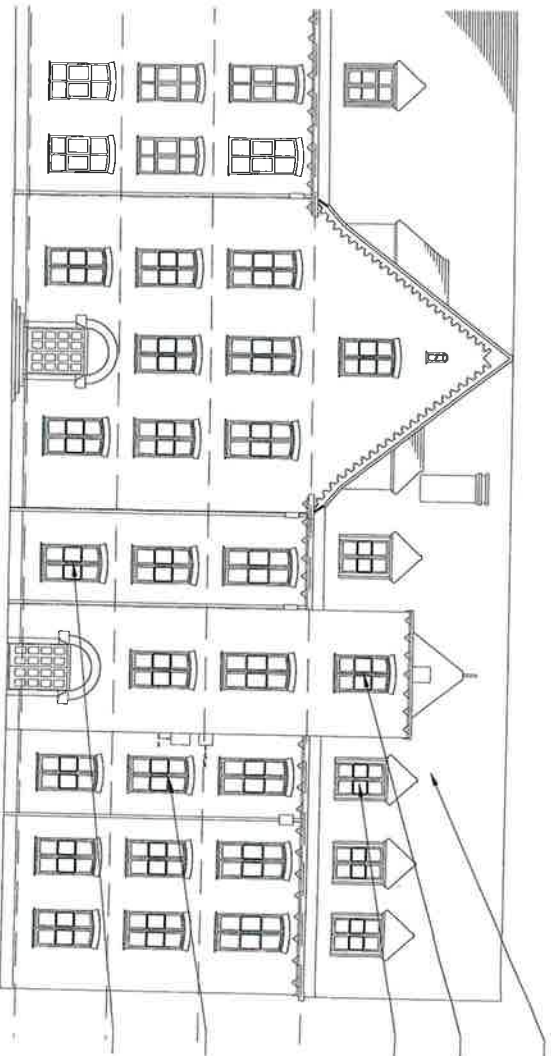
dn-a



# EXISTING EAST AND SOUTH ELEVATIONS

Drawn By: ET  
Date: 19/07/2019  
Created By: A  
Drawing No: 1320 / PL / 109  
Revision By: Rev: 1  
Rev date: 1320 / PL / 109

1 Castle Road Richmond  
London TW9 0 6TF  
T: +44 (0) 20 8332 3900  
F: +44 (0) 20 8332 3901  
www.dn-a.com



NORTH ELEVATION 1

EXISTING TILES TO MAIN ROOF, DORMERS AND DORMERS CHEEKS TO BE REPLACED

EXISTING WINDOWS REPLACED WITH METAL EXTRACT GRILLES

DORMER WINDOWS INCREASED IN HEIGHT WITH METAL FLAT BAR BALUSTRADE AND NEW WINDOWS

EXISTING WINDOWS REPLACED WITH NEW METAL DOUBLE GLAZED WINDOWS

EXISTING WINDOWS REPLACED WITH METAL EXTRACT GRILLES

## MATERIALS

### Main Roof :

Marley Lincoln Clay Pantiles - Colour Natural Red  
Dormer Cheeks & Tops:

Marley Concrete Plain Roof tile - Colour  
Wosborough Red

Balcony Balustrade:

MS steel 40X10mm uprights and rails - Colour Jet  
Black RAL 9005

Windows:

Salisbury Glass double glazed aluminium thermally  
broken windows and Juliet balcony doors - Colour  
White RAL 9016

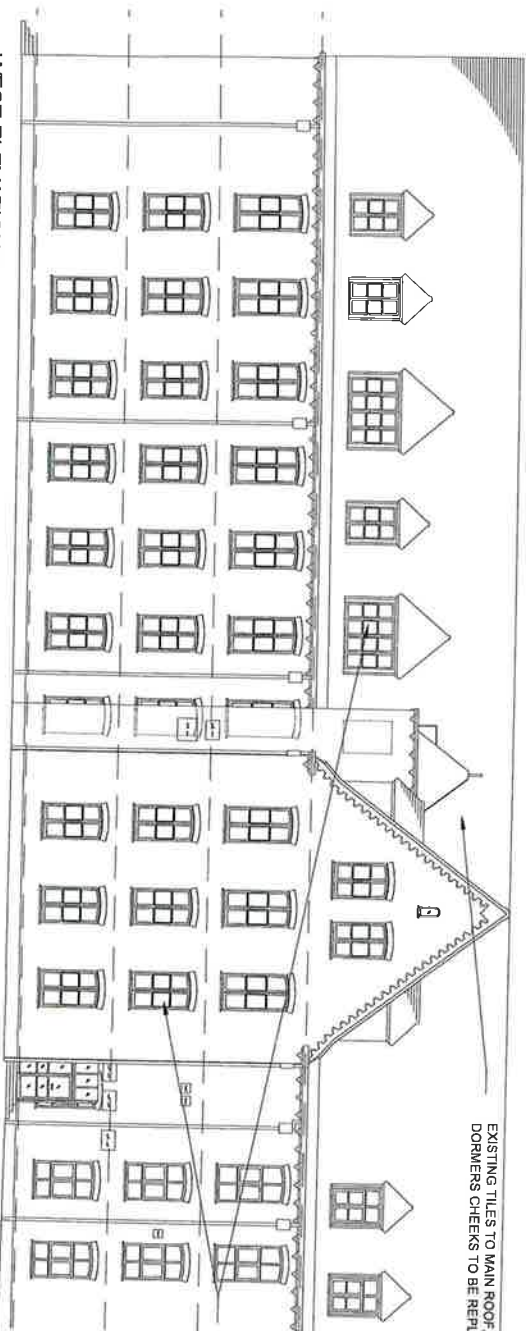
Extract Grilles to AOVs:

PPC - Colour Jet Black - RAL 9005  
Extract Grilles to Smoke Extract Vents:

PPC - Colour Copper Brown - RAL 8003

Shopfronts:

PPC - double glazed aluminium thermally broken  
shopfronts - Colour Jet Black 9005

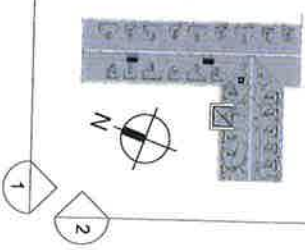


WEST ELEVATION 2

EXISTING TILES TO MAIN ROOF, DORMERS AND DORMERS CHEEKS TO BE REPLACED

EXISTING WINDOWS REPLACED WITH NEW METAL DOUBLE GLAZED WINDOWS

19/01031



## EXISTING WEST AND NORTH ELEVATIONS

Drawn By: ET  
Date: 19/07/2019  
Scale: 1:200 @ A3  
Checked By: -  
Drawing No: 1320 / PL / 108  
Authorised By: -  
Revision By: -  
Rev date: -  
Rev: -

WEST WING - KNOWLE GREEN ESTATES LIMITED

1 Castle Yard Richmond  
London TW9 6TF  
T: +44 (0) 20 8332 3900  
F: +44 (0) 20 8332 3901  
www.myn-a.com

NEW CLAY PANTILES TO MATCH EXISTING WITH PLAIN CONCRETE TILES TO DORMERS CHEEKS AND LEAD FLASHINGS. NEW LININGS TO STONE GUTTERS

DORMER WINDOWS INCREASED IN HEIGHT WITH METAL FLAT BAR BALUSTRADE (COLOUR BLACK). NEW WINDOW INSERTS TO BE METAL DOUBLE GLAZED UNITS (COLOUR WHITE) (SHOWN ORANGE)

EXISTING WINDOWS REPLACED WITH NEW METAL DOUBLE GLAZED WINDOWS - COLOUR WHITE (SHOWN BLUE)

NEW ALUMINIUM SHOPFRONT

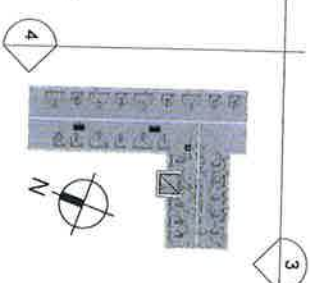
SOUTH ELEVATION 3



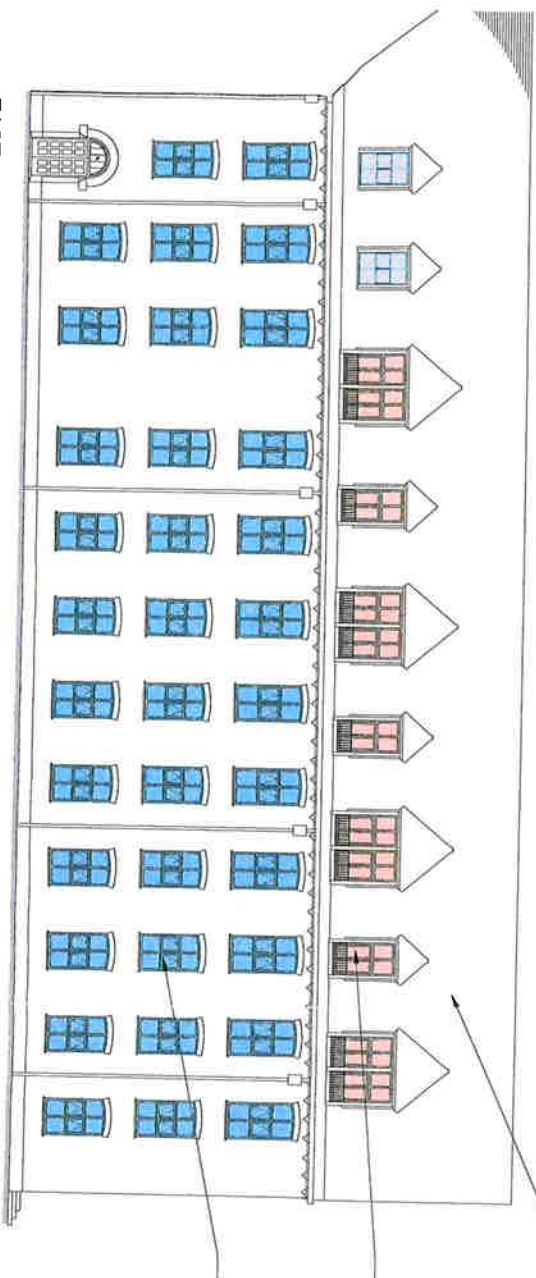
NEW CLAY PANTILES TO MATCH EXISTING WITH PLAIN CONCRETE TILES TO DORMERS CHEEKS AND LEAD FLASHINGS. NEW LININGS TO STONE GUTTERS

DORMER WINDOWS INCREASED IN HEIGHT WITH METAL FLAT BAR BALUSTRADE (COLOUR BLACK). NEW WINDOW INSERTS TO BE METAL DOUBLE GLAZED UNITS (COLOUR WHITE) (SHOWN ORANGE)

EXISTING WINDOWS REPLACED WITH NEW METAL DOUBLE GLAZED WINDOWS - COLOUR WHITE (SHOWN BLUE)



EAST ELEVATION 4



## MATERIALS

Main Roof :  
Marley Lincoln Clay Pantiles - Colour Natural Red  
Dormer Cheeks & Tops:  
Marley Concrete Plain Roof tile - Colour Mosborough Red  
Balcony Balustrade:  
MS steel 40X10mm uprights and rails - Colour Jet Black RAL 9005  
Windows:  
Salisbury Glass double glazed aluminium thermally broken windows and Juliet balcony doors - Colour White RAL 9016  
Extract Grilles to AOVs:  
PPC - Colour Jet Black - RAL 9005  
Extract Grilles to Smoke Extract Vents:  
PPC - Colour Copper Brown - RAL 8003  
Shopfronts:  
PPC - double glazed aluminium thermally broken shopfronts - Colour Jet Black 9005



19/01031



## EAST AND SOUTH ELEVATIONS

Drawn By: E.T. DML  
Created By: Scale  
Checked By: 1:200 @ A3  
Approved By: Drawing No: 1320 / PL / 107  
Revision By: Rev:

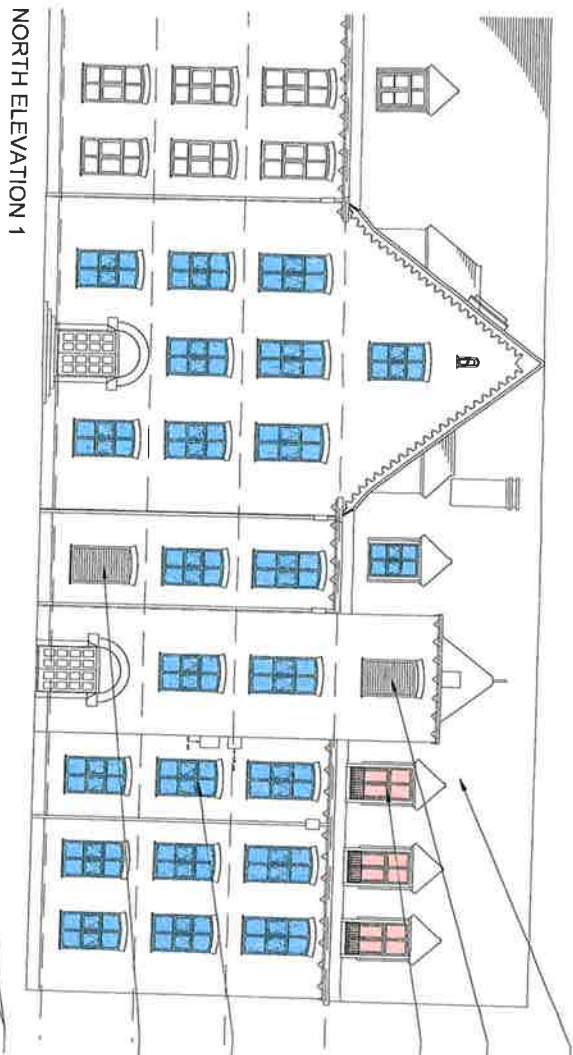
1 Castle Way Richmond  
London TW9 0 6TF  
T: +44 (0) 20 8332 3900  
F: +44 (0) 20 8332 3901  
www.mga.co.uk

WEST WING - KNOWLE GREEN ESTATES LIMITED



**MATERIALS**

- Main Roof:**  
 Marley Lincoln Clay Pantiles - Colour Natural Red  
 Dormer Cheeks & Tops:  
 Marley Concrete Plain Roof tile - Colour Mosborough Red  
 Balcony Balustrade:  
 MS steel 40X10mm uprights and rails - Colour Jet Black RAL 9005  
**Windows:**  
 Salisbury Glass double glazed aluminium thermally broken windows and Juliet balcony doors - Colour White RAL 9016  
 Extract Grilles to AOVs:  
 PPC - Colour Jet Black - RAL 9005  
 Extract Grilles to Smoke Extract Vents:  
 PPC - Colour Copper Brown - RAL 8003  
**Shopfronts:**  
 PPC - double glazed aluminium thermally broken shopfronts - Colour Jet Black 9005



NEW CLAY PANTILES TO MATCH EXISTING WITH PLAIN CONCRETE TILES TO DORMERS CHEEKS AND LEAD FLASHINGS. NEW LININGS TO STONE GUTTERS

ALUMINIUM Z PROFILE AOV

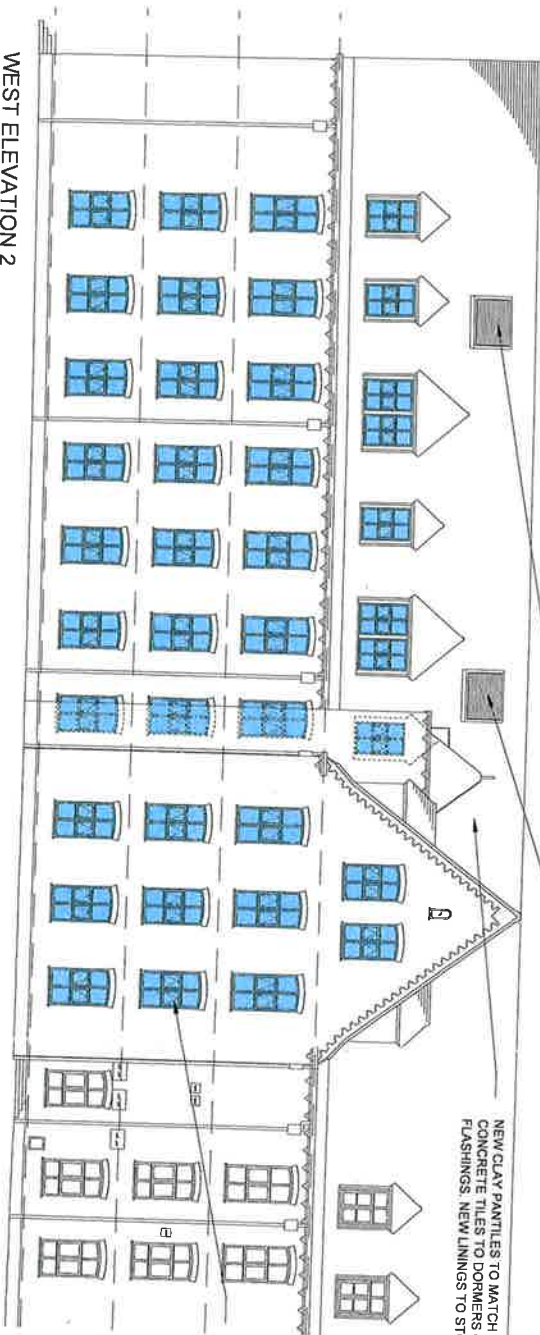
DORMER WINDOWS INCREASED IN HEIGHT WITH METAL FLAT BAR BALUSTRADE (COLOUR BLACK. NEW WINDOW INSERTS TO BE METAL DOUBLE GLAZED UNITS (COLOUR SHOWN ORANGE)

EXISTING WINDOWS REPLACED WITH NEW METAL DOUBLE GLAZED WINDOWS - COLOUR WHITE (SHOWN BLUE)

ALUMINIUM Z PROFILE AOV

ALUMINIUM SMOKE EXTRACT VENTS

NORTH ELEVATION 1



NEW CLAY PANTILES TO MATCH EXISTING WITH PLAIN CONCRETE TILES TO DORMERS CHEEKS AND LEAD FLASHINGS. NEW LININGS TO STONE GUTTERS

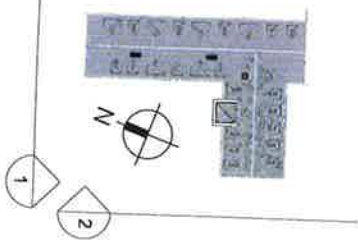
EXISTING WINDOWS REPLACED WITH NEW METAL DOUBLE GLAZED WINDOWS - COLOUR WHITE (SHOWN BLUE)

EXISTING WINDOWS REPLACED WITH NEW METAL DOUBLE GLAZED WINDOWS - COLOUR WHITE (SHOWN BLUE)

WEST ELEVATION 2



19/01031



**WEST AND NORTH ELEVATIONS**

Drawn By: ET  
 Date: 19/07/2019  
 Scale: 1:200 @ A3  
 Checked By: \*  
 Drawing No: 1320 / PL/106  
 Authorised By: \*  
 Rev: 01  
 Rev: 01

1 Little Yard Richmond  
 London  
 E: +44 (0) 20 8332 0017  
 F: +44 (0) 20 8332 3901  
 www.mpr-na.com

WEST WING - KNOWLE GREEN ESTATES LIMITED